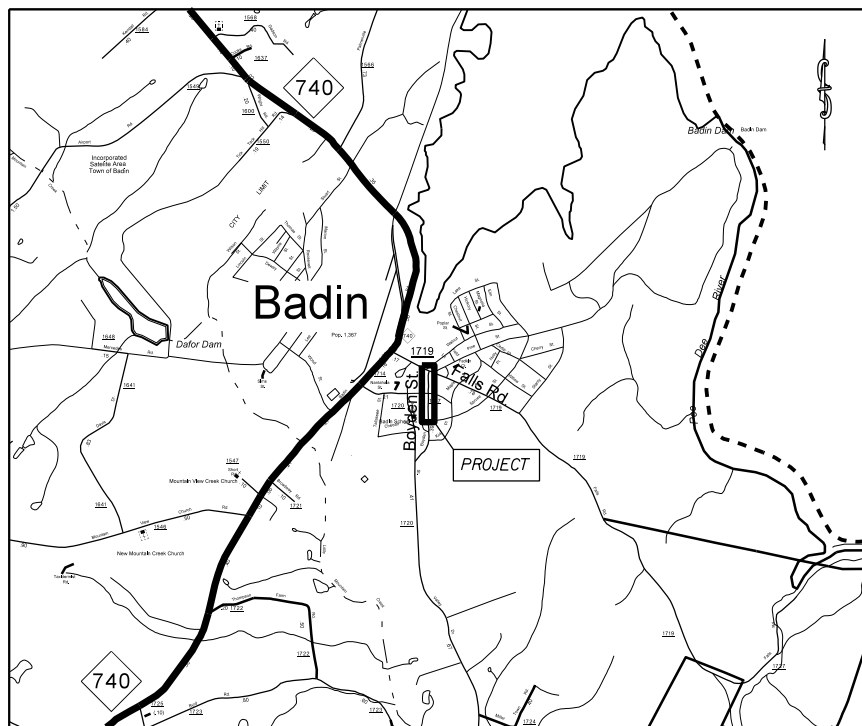


PROJECT: 40924.3.64 TIP:SR-5001BM

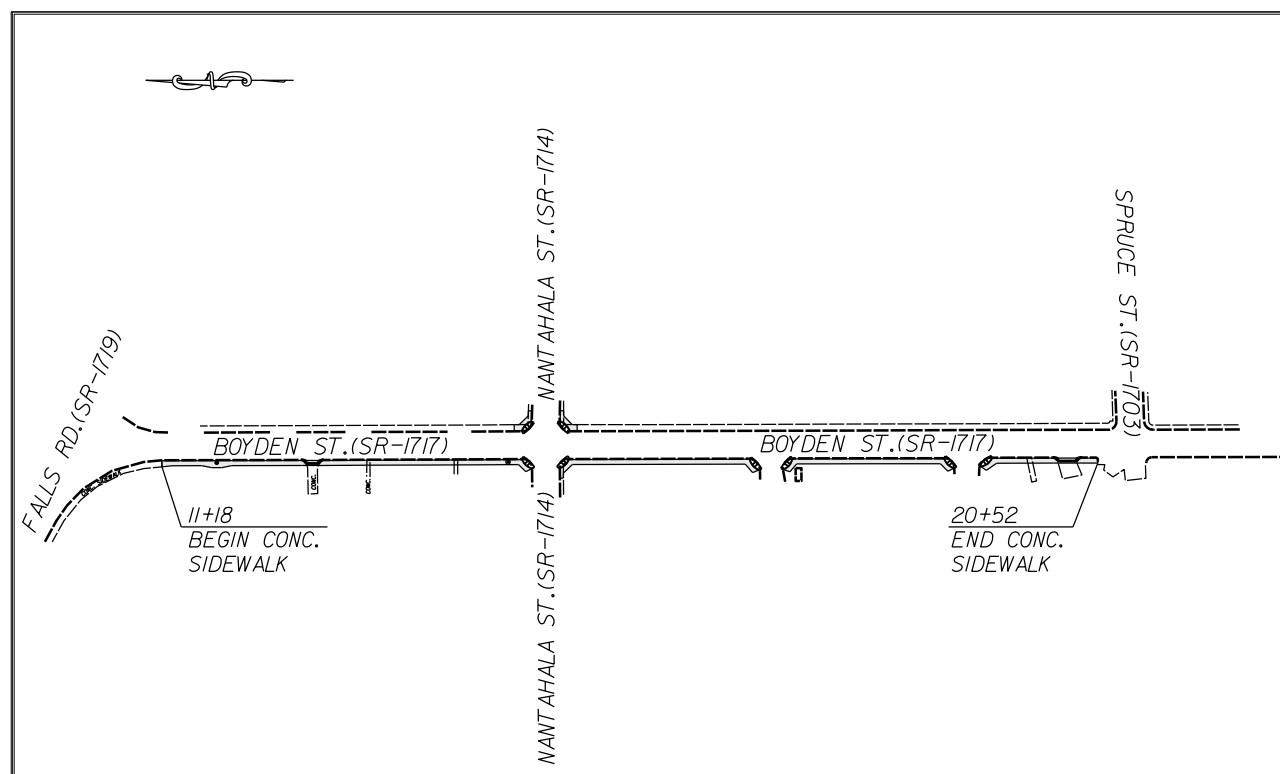


VICINITY MAP NOT TO SCALE

STATE OF NORTH CAROLINA
DIVISION OF HIGHWAYS
STANLY COUNTY

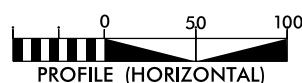
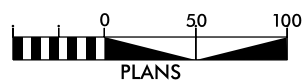
LOCATION: WEST SIDE OF OF BOYDEN ST. (SR-1717) FROM FALLS RD. (SR-1719), TO SPRUCE ST. (SR-1703).

TYPE OF WORK: CONCRETE SIDEWALK, CONCRETE CURB RAMPS, CONCRETE DRIVEWAYS, AND SELECT TREE REMOVAL.



STATE	STATE PROJECT REFERENCE NO.	SHEET NO.	TOTAL SHEETS
N.C.	40924.3.64	1	
STATE PROJ. NO.	F.A. PROJ. NO.	DESCRIPTION	
40924.3.64	SRS-1717(1)	P.E.	
		R/W	
		CONST.	

GRAPHIC SCALES



DESIGN DATA

ADT =
ADT =
DHV = %
D = %
T = %
V = MPH

PROJECT LENGTH

LENGTH OF ROADWAY PROJECT 40924.3.64 = 0.18 MILES
TOTAL LENGTH OF STATE PROJECT 40924.3.64 = 0.18 MILES

Prepared in the Office of:
DIVISION OF HIGHWAYS

DIVISION TEN
DIVISION DESIGN / CONSTRUCT UNIT

RIGHT OF WAY DATE:

LETTING DATE:
AUGUST 5, 2015

RANDY BOWERS
PROJECT ENGINEER

DONALD HARWARD
PROJECT DESIGN ENGINEER



DIVISION OF HIGHWAYS
STATE OF NORTH CAROLINA

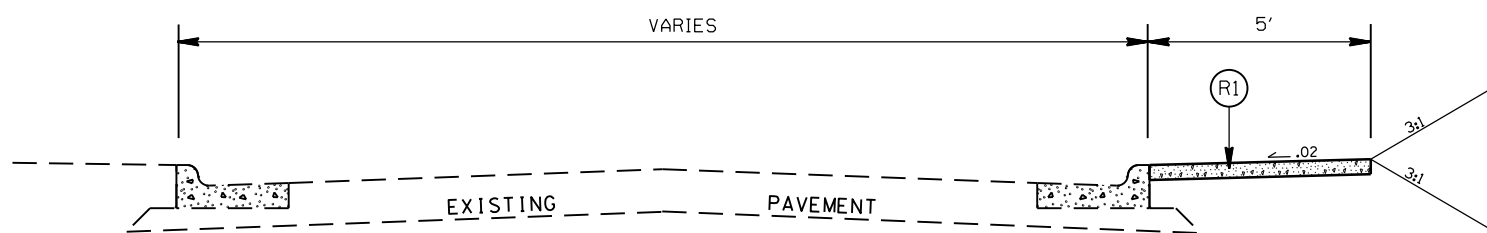
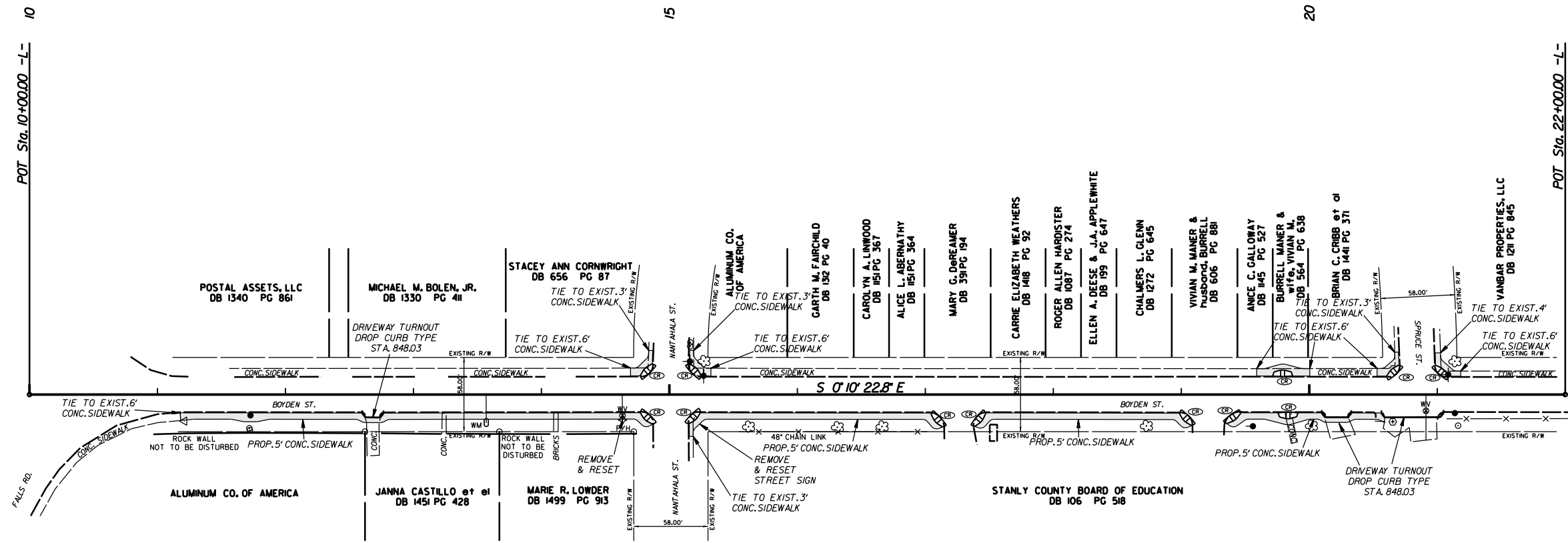
DocuSigned by:

Randy Bowers 7/7/2015

52A4A66079864B2...
APPROVED BY

DDC ENGINEER DATE

STATE	PROJECT NO.	SHEET NO.	TOTAL SHEETS
N.C.	40924.3.64	3	
F.A. PROJECT NO.			



TYPICAL SECTION NO. 1
STA. 11+18 TO 20+52 -L-

PAVEMENT SCHEDULE

(R1)	PROP. 4" CONCRETE SIDEWALK
------	----------------------------

SIDEWALK ON WEST SIDE OF
BOYDEN ST. IN BADIN, N.C.
FROM FALLS RD. TO
SPRUCE ST.

SCALE	1"=50'
DATE	3-2015
DWG. BY	JDH
DESIGN BY	JDH
APPROVED	RWB



REVISIONS	